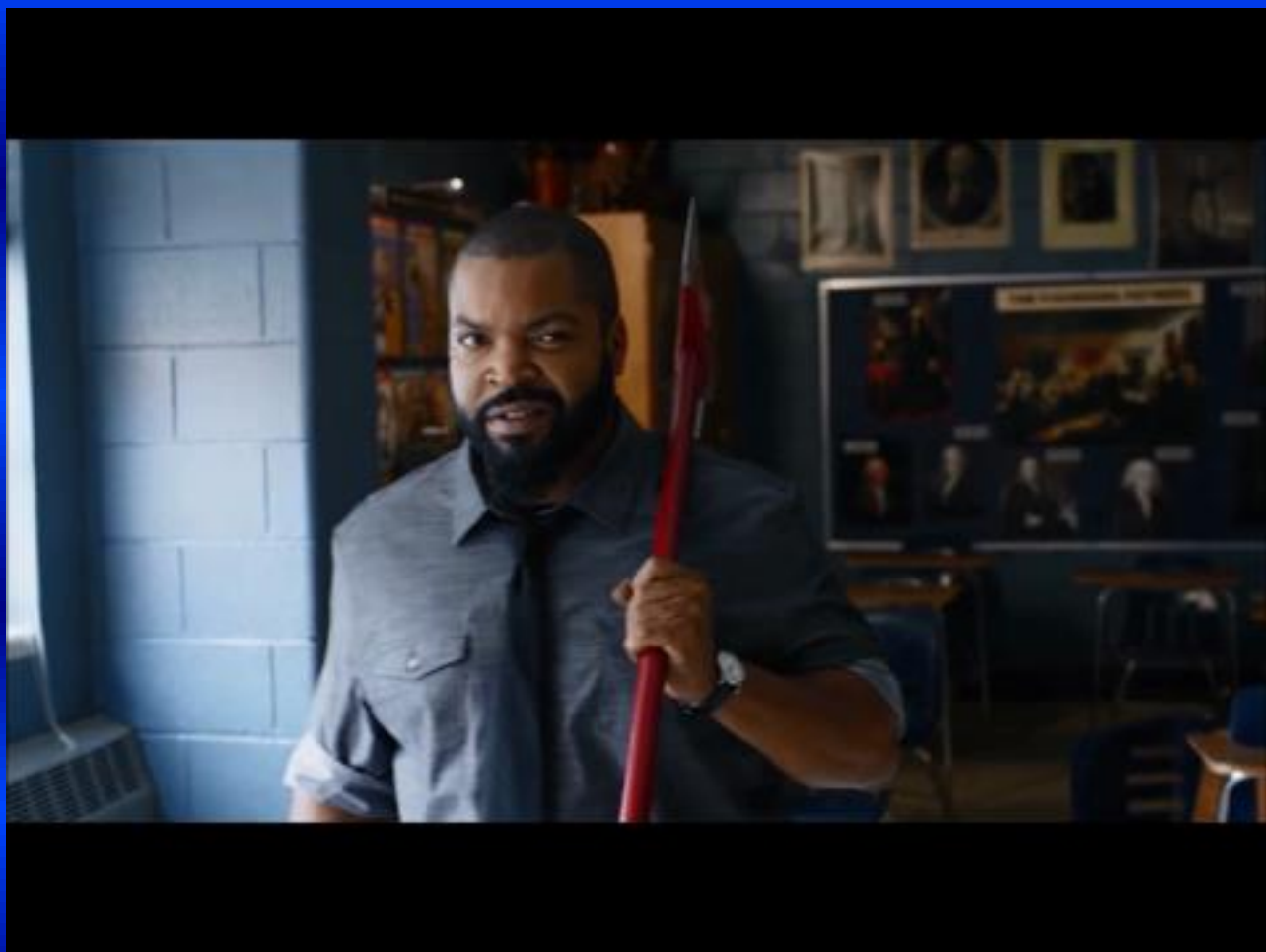


# Our Common Goal

Law Enforcement and School  
Partnerships

Major Joey C. Mayeaux (Ret.)  
Ascension Parish Sheriff's Office



# Vision 2000



- Be perceived as the finest Sheriff's Office in the state of Louisiana
- Have sufficient resources to fulfill our mission
- Have a highly competent work force
- Perception by all citizens that we live in a safe community
- All employees feel they are a valued part of the organization and its success

# SSO Vs. SRO

- SRO
  - 6 Full time SRO's, each high school has 1 deputy permanently assigned and 2 supervisors.
  - SRO cover some school administration jobs
    - Issuing parking passes
    - Directing traffic
    - Issuing school lockers

# SSO Vs. SRO

- SSO – School Security Office
  - 6 full time SSO's which patrol the Primary and Middle Schools with over 5000 walk-throughs a year.
  - 16 Patrol Deputies which cover the 4 High Schools. With 1 deputy stationed at each high school for 2 week tours.

# SSO Vs. SRO

- SSO Duties
  - Patrol parking lots
  - Patrol school halls and grounds
  - Be in areas of congregation (lunch room and commons area)
  - Assist in school investigations
  - Conduct law enforcement investigation

# SSO

- Why Patrolmen
  - Their normal duties keep them current on LE issues.
  - They are not at the end of their career but have a minimum of 2 years of enforcement.
  - With only 2-week rotations as an SSO, the job doesn't become routine or stale.
  - Students do not become overly familiar with them.

# SSO

- Minimum requirements for SSO division
  - Minimum of 2 years in Patrol.
  - Qualify with a 90% score on handgun and rifle.
  - Pass the SOPAT physical fitness test.



# SSO's What do you do with them?

- Treat them as you would any other professional.
- Understand their limits.
  - Search and Seizure
  - Miranda



# SSO's What do you do with them?

- Fights

- School handles most disciplinary action unless there is

- Blood
    - Battery of School official
    - Chaos

On these we will make an arrest.

# SSO's What do you do with them?

- Off Campus issues
  - Give us the information in a timely manner
- Suspicious activity
  - Get the information to us as soon as possible
- Required reporting incident
  - Get the information to us as soon as possible
  - Let us investigate and determine if there is a criminal incident

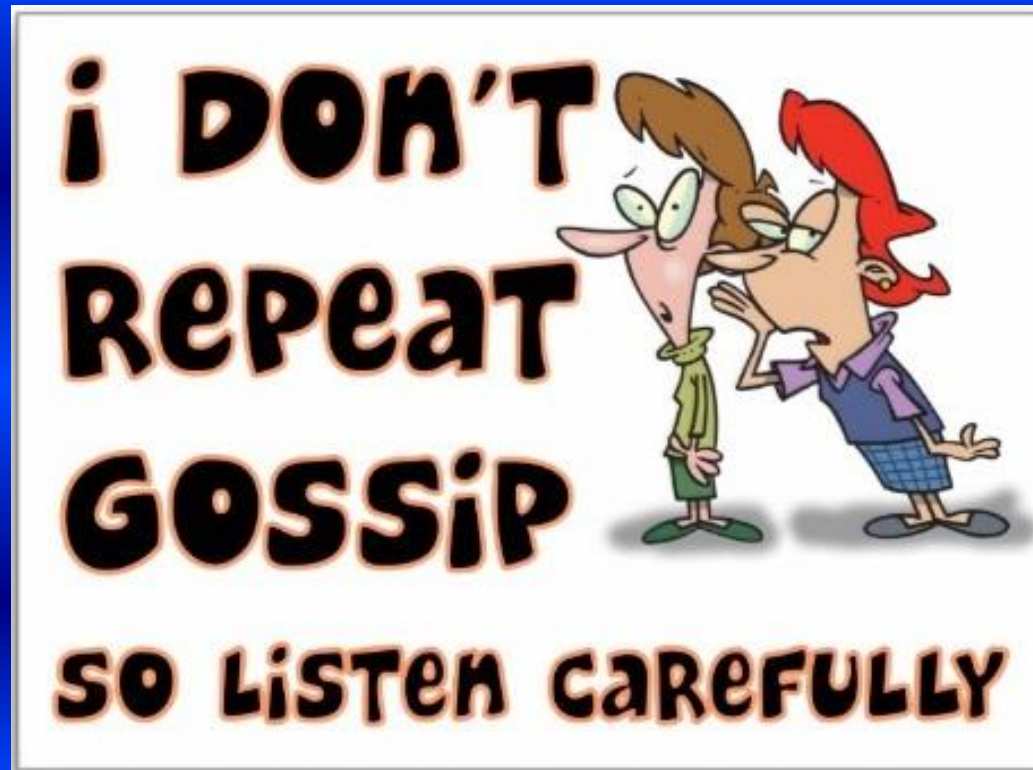
Write Your Report Expecting Court

# The Information We Need

- Report information
  - Write the story as you saw it.
  - Write it in the first person.
  - Use name instead of he, she, them.
  - If you don't know their names use descriptions.
  - Write in chronological order.
  - If you don't write it, it didn't happen
  - Remember to answer the basics: Who, What, When, Where, How, and Why.

# The Information We Need

- Report Information Cont.
  - Information you know but didn't see first hand.
    - Include the information but note where you got the information from.



- This report is your documentation of the incident.
- You will use it to refresh your memory 2-3 years later in some cases longer.
- It will be entered into court record.

*“ I knew Johnny and Bobby were fighting so I  
broke it up”*

Very conclusive straight to the point but what  
was left out.



*“While in my room I heard a disturbance coming from the adjacent hall, which I believed to be a fight. Upon exiting my room I saw Bobby and Johnny fighting. I saw Bobby standing over Johnny holding Johnny's hands and Johnny continuing to kick Bobby.”*

*A clear picture from your viewpoint.*

- Always write your report expecting to have to testify in court.



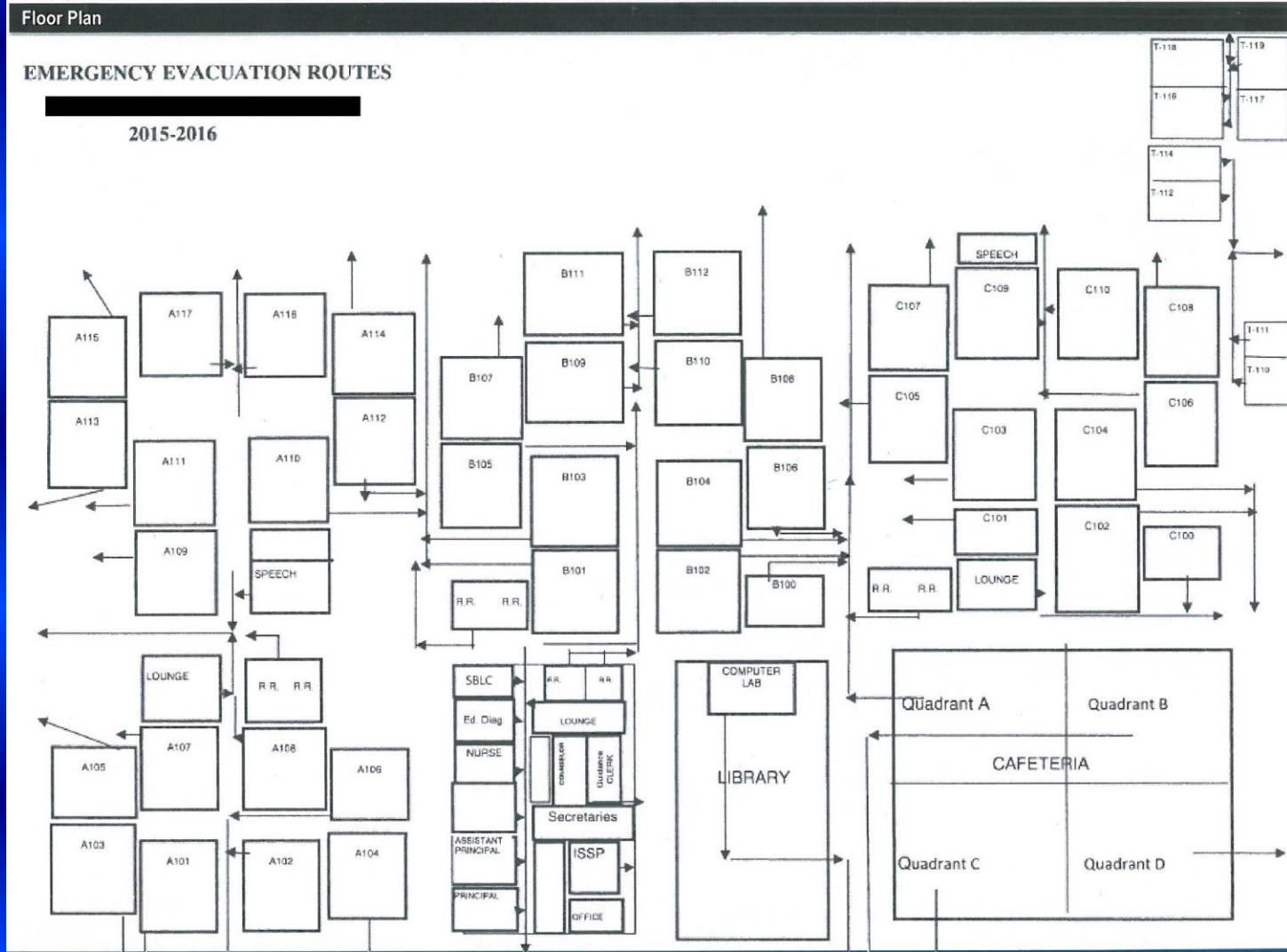
# Are You Ready

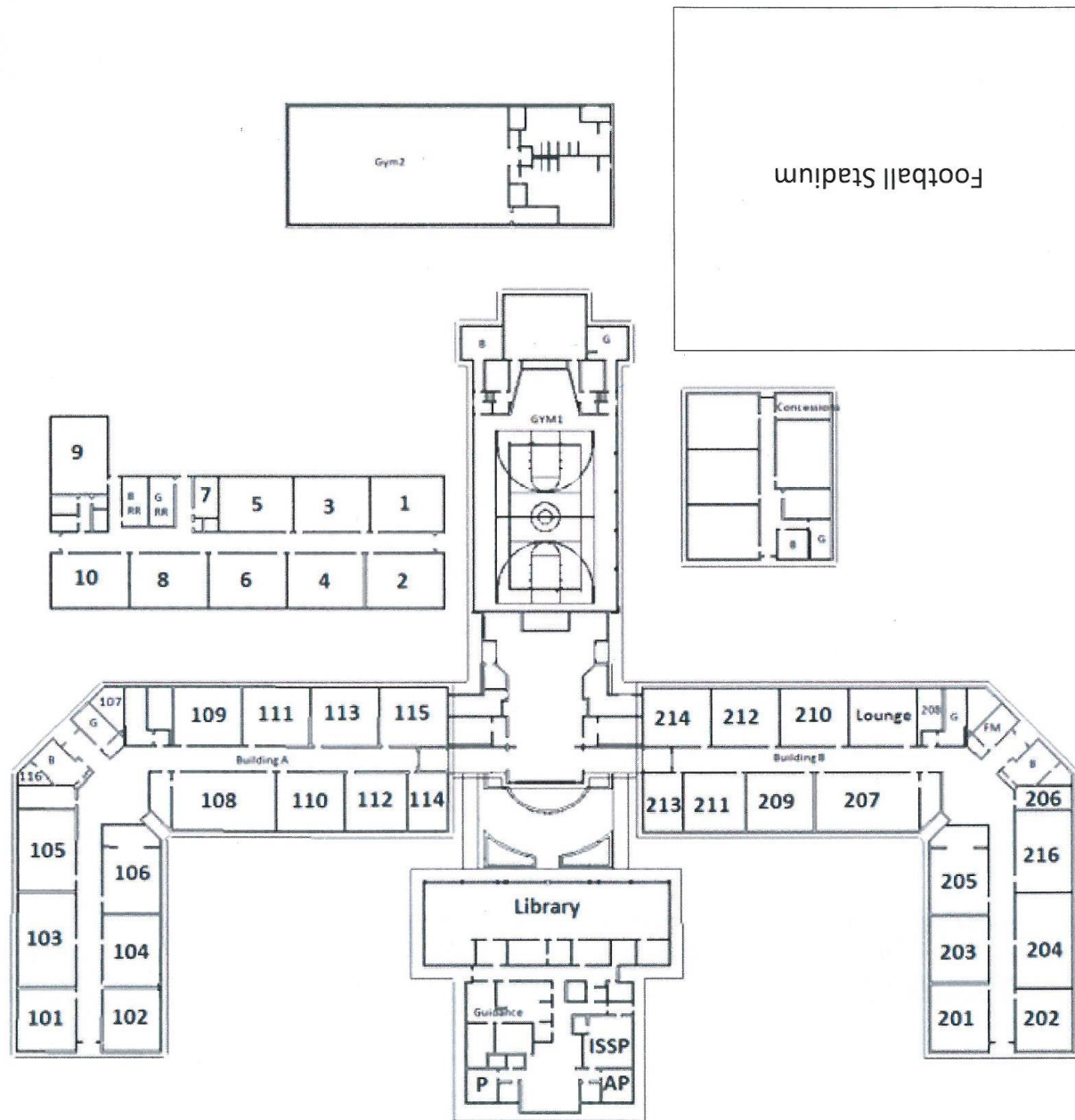


# Major Incidents: Outside the Day to Day

- Do you train?
- Are you and your team prepared?
- Are you covered legally?
- Is it documented?
- Can your plan survive the first gunshot?

When you have to go to court and defend your districts action or planning, are you ready.







# Fight or Flight

- Triggering the effect - your body/system encounters an unknown perceived threat.
  - Flight:
    - You either “lock-up” or run away for safety.
  - Fight:
    - Aggress the threat or immediately start thinking through the threat.

Anyone caring for children must react in Fight mode or Thinking mode.



How did you react to a “startling” incident

Fight or Flight

Did you hunker down or did you try to identify the threat.

The fight mode is the ability to think and then act when you are startled or threatened.

# Training

- LEO are mandated to maintain 40 hours of training a year.



Firearms



Law



Defensive Tactics

# Situational training



- Building clearing
  - Shoot/Don't Shoot

- Interactive training



# School Drills & Planning

- **Lockdown drills**
  - Unannounced
  - Complete school involvement
  - Debriefing and critique
- **District Crisis Team meeting**



# Plan for a Lockdown

- Knowing your students...
  - Diabetic
  - Allergies
  - Epileptic
  - Social/Emotional/Behavior issues
  - Infections

- What do you need?

- Student roster
- basic first aid kit (lot of gauzes pads & tape)
- gloves
- snacks
- garbage bags
- paper towels
- tissue paper
- 5 gal bucket
- water



# After the Active Shooter



# After the Shooting

- The active shooter





# Three next steps

- Get medical aid in and evacuating the school.
- Account for all students
- Uniting student with their parents

# Priorities inside the school

- Know injuries
  - Clearing/evacuating room that were involved in the incident.
  - Clearing/evacuating all rooms

# Threat is Over?

- The known threat has been stopped, why not let the school come off Lockdown?



- +1.....

- 1 suspect is stopped how many more are there.



# First Aid & Evacuation



# Rescue Task Force - RTF

The RTF in a team of 5-6 people:

- 3 LEO's
  - Cover team only duty is to provide cover for the Fire/EMS personnel
- 2-3 EMS
  - FIRE/EMS team trained to work with LEO. The will stabilize the patient and stretcher them to Triage Point.

# Evacuation Teams

These are made up of LEO



# Evacuation

Every Room has a Suspect.



When the police open the classroom door, everyone will be ordered to put their hands up.

**Follow Orders**

# Safety Safety Safety

- If everyone put there hands up we can see that there are no threats.
- Gives the student the chance to let us know if a suspect is hiding amongst them.
- You will be told to keep your hand up until everyone is checked.





# Keep it together

Keep your class together.



It is going to feel like mass confusion,

but keeping class integrity is going to be important.



# Active Shooter Exercise







ONE LANE  
NO PARKING  
NOVEMBER 2001

VISITORS  
PLEASE REPORT TO 1000  
NO MEDICALS

**DUTCHTOWN MIDDLE** LAT: [REDACTED] LONG: [REDACTED]  
 13078 Hwy 73, Geismar, LA 70734

**DUTCHTOWN PRIMARY** LAT: [REDACTED] LONG: [REDACTED]  
 13046 Hwy 73, Geismar, LA 70734

- Outer Perimeter
- Inner Perimeter
- Utilities**
- Electric
- Gas
- Water
- Sewer
- Alarm
  
- ICP
- CRT Rally Pt.
- Long Range Rifle Pt.
- Traffic Control Pt.
- Security Check Pt.
- JIC
- Media Stage
  
- Triage/Med Evac Pt.
- EMS Stage
- Fire Stage
- First Aid/ Rehab Site
- AirMed/ LZ
- LZ** Lat Lon
- [REDACTED]
  
- Evac Assembly Pt.
- Reunification Center
- Bus/Evac Stage

MAIN OFFICE NUMBER: 225. [REDACTED]

	Principal	Asst. Principal	Asst. Principal	Facility Manager/ Janitor
N	[REDACTED]	[REDACTED]	[REDACTED]	[REDACTED]
O	225. [REDACTED]	225. [REDACTED]		225. [REDACTED]
C				
E				

**SITE POPULATION**

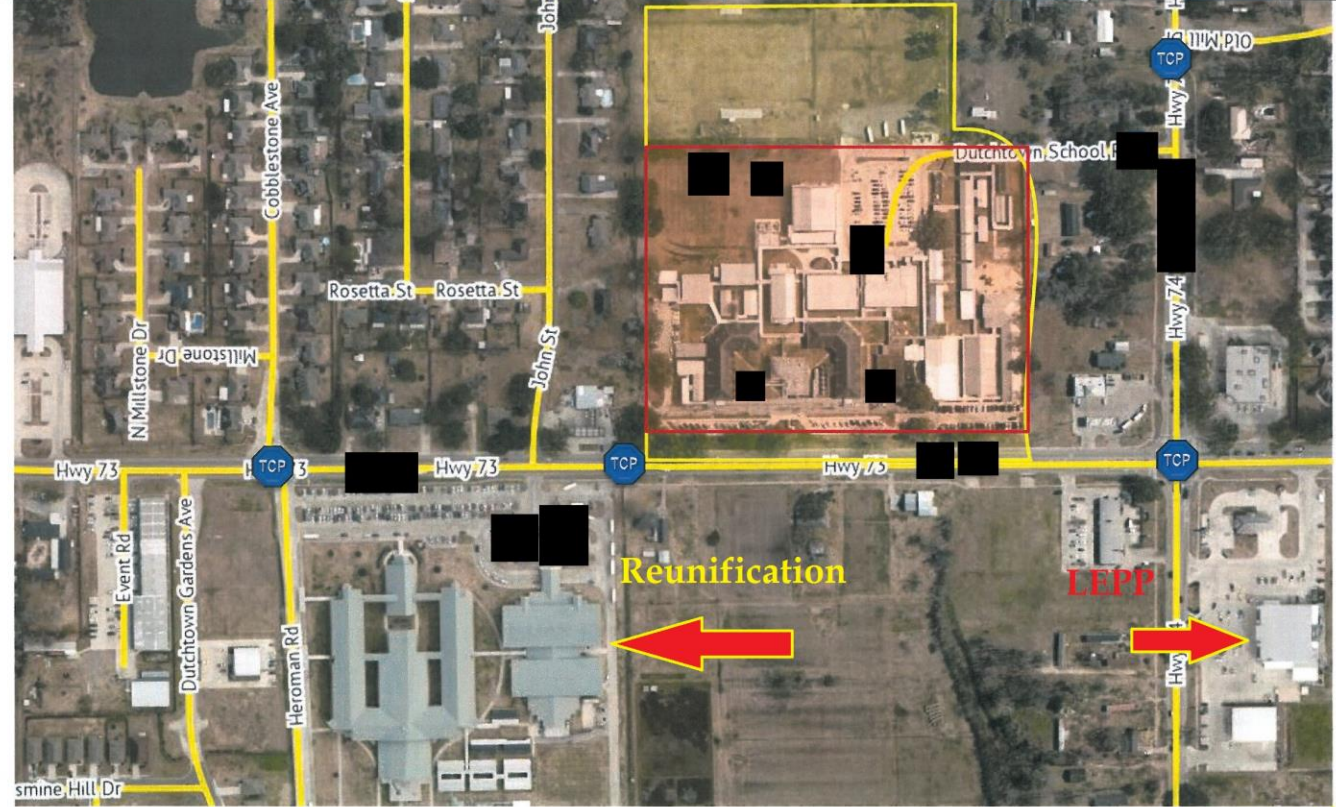
Admin & Faculty	Support Staff	Special Needs Pop.	Total Students
40	74	?	840

MAIN OFFICE NUMBER: 225.391.7850

	Principal	Asst. Principal	Asst. Principal	Facility Manager/ Janitor
N	[REDACTED]	[REDACTED]	[REDACTED]	[REDACTED]
O	225. [REDACTED]	225. [REDACTED]		225. [REDACTED]
C	225. [REDACTED]	225. [REDACTED]		225. [REDACTED]
E				

**SITE POPULATION**

Admin & Faculty	Support Staff	Special Needs Pop.	Total Students
40	75	?	810



# LEPP

## LEPP - Law Enforcement Processing Point

- School officials will check in student by class - accountability
- LEO will do a quick brief to determine if there are any witnesses in the group
- School officials will process out the class/students.

# Reunification Center

After leaving the LEPP they will be transported to the Reunification Center, which is run by the school, not LEO.

- All parents will go to this predetermined location. (Determined before school year.)
- Children will be signed out by parent or legal guardian.
- Parent notifications.

# Our Common Goal





